



SSHRC  CRSH

Insight Grants Funding Opportunity

August 21, 2025

Presentation Plan

Overview of the Funding Opportunity

Eligibility Overview



Interview with STRAC

Committee Structure and Committee selection

Merit Review Process

Joint Initiatives

Application Preparation



Interview with SARF

Questions and Answers



INSIGHT GRANTS : Objectives and features

Insight Grants support research excellence in the social sciences and humanities.

APPLICANT

Principal Investigator
Co-applicants and/or Collaborators

DURATION

2 - 5 years

VALUE

New! \$10,000 - \$125,000 (Stream A)
\$125,001 - \$500,000 (Stream B)

FUNDING

No separate envelope for Emerging Scholars

Insight Grants Deadline : October 1, 2025, at 8 p.m. (Eastern) (check internal deadlines)



INSIGHT GRANTS RESULTS (2020-2024)

	Oct. 2020	Oct. 2021	Oct. 2022	Oct. 2023	Oct. 2024
Number of Committees	25	26	26	26	26
Number of eligible applications	(A) 496 (B) 717 T: 1,213	(A) 427 (B) 657 T: 1,084	(A) 413 (B) 732 T: 1,145	(A) 508 (B) 969 T: 1,477	(A) 642 (B) 1078 T: 1, 720
Overall success rate	(A) 56,65% (B) 49,65%	(A) 56.44% (B) 48.55%	(A) 50.60% (B) 41.12%	(A) 40.75% (B) 30.55%	(A) 44.9% (B) 37.6%
Requested amount	\$ (A) 41,705,518 (B) 183,039,458	\$ (A) 36, 349,321 (B) 174,565,729	\$ (A)35,855,352 (B) 197,280,970	\$(A)43,893,114 (B)270,955,428	\$(A) \$56,404,321 (B) 300,784,485
Average requested	\$ (A) 84,083 (B) 255,285	\$ (A) 85,127 (B) 265,701	\$ (A) 86,817 (B) 269,510	\$ (A) 86,404 (B) 279,624	\$(A) \$87,857 (B) \$279,021
Awarded amount	\$ (A) 23,184,285 (B) 80,816,747	\$ (A) 19,452,722 (B) 77,223,393	\$ (A) 17,243,859 (B) 72,226,162	\$(A) 16,929,169 (B) 69,386,084	\$ (A) 24,336,804 (B) 103,344,826
Average awarded	\$ (A) 82,506 (B) 227,013	\$ (A) 80,717 (B) 242,080	\$ (A) 82,507 (B) 239,954	\$ (A) 81,783 (B) 234,412	\$ (A) 84,502.79 (B) 255,172.41

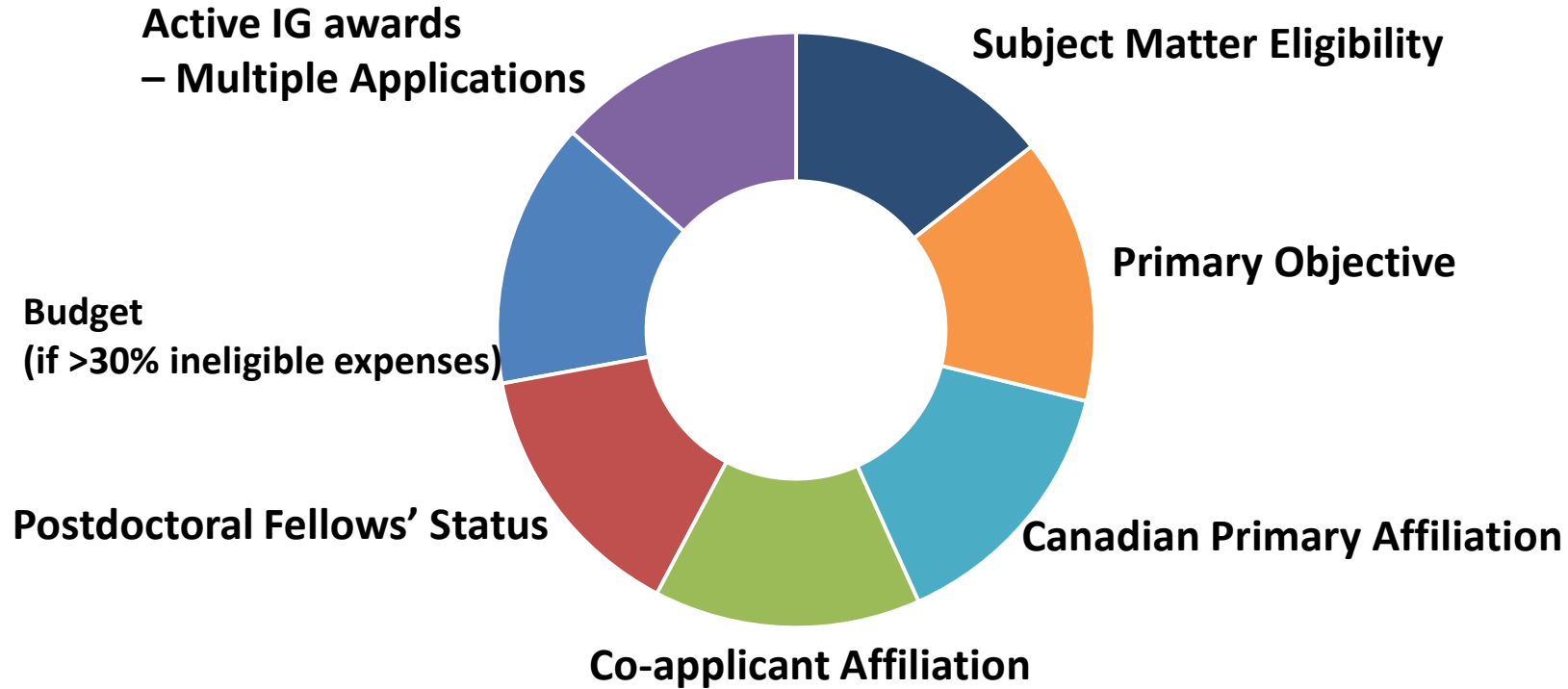
Multiple Applications

- Researchers may not apply as an applicant for an Insight Grant (IG) and an Insight Development Grant (IDG) within the same calendar year.
- **An exception** approved in 2017 : researchers who applied **unsuccessfully** for an IDG in February can apply for an IG in October. SSHRC extends this exception to the multiple applications regulations for the foreseeable future.
- A researcher who applies for an IG in October 2025 can apply for an IDG in February 2026, provided that the objectives of the research are significantly different.
- **Re-application:** A current grant holder may submit a new application for the same type of grant, but only in their grant's final year (year in which the grant holder receives the final installment of their grant).

Please refer to [SSHRC's Regulations Regarding Multiple Applications](#) for more information.



ELIGIBILITY VERIFICATION



Subject Matter Eligibility (1)

- Applications to SSHRC are reviewed for eligibility based on SSHRC's [General Guidelines for the Eligibility of Subject Matter](#) respecting the following criteria:
 - The objectives of the proposed research or related activities must be primarily in the social sciences and humanities (aligned with SSHRC's [legislated mandate](#)).
 - Applicant should ensure that the intended outcomes are clearly within SSHRC's mandate and not health or natural science related.
- Applicants should apply to the agency that is responsible for the **dominant research discipline or area** as defined by the agencies' "[Selecting the Appropriate Federal Granting Agency](#)" and [General Guidelines for the Eligibility of Subject Matter](#).
- For eligibility-related advice, applicants are encouraged to send a detailed summary (including the proposed objectives and expected outcomes) to the IG inbox: insightgrants@sshrc-crsh.gc.ca



Subject Matter Eligibility (2)

- SSHRC does not support research that is **primarily** health or natural science related.
 - The use of social sciences or humanities theories, methodologies and hypotheses is, in and of itself, not sufficient to make a proposal eligible for SSHRC funding;
- Research related to health and wellness and natural science and engineering : investigators should consult CIHR's and NSERC's mandate **first** to explore eligibility. CIHR and NSERC have policies and procedures in place to adjudicate the full range of social sciences and humanities research proposals related to health research as well as to natural sciences and engineering.
- Process for determining SME eligibility: an internal group assesses the eligibility of proposals whose research is related to health and wellness, and/or the natural sciences and engineering.



SUBJECT MATTER ELIGIBILITY (3):

EXAMPLES OF INELIGIBLE APPLICATIONS

- Clinical education of/for health care professionals
- Clinical research (e.g., treatment, prevention or diagnosis of a condition, disorder, or disease; testing or evaluating the impact of interventions, medication, or medical aids)
- Therapy, counselling, psychotherapy, sex therapy, art therapy, rehabilitation, speech and occupational therapy, clinical supervision, neuropsychology, validation/testing of diagnostic tools
- Psychomotor and kinesiology research
- Epidemiology



Subject Matter Eligibility (4): psychology applications

- **SSHRC** considers applications within the broad areas of personality, social, developmental, educational psychology, and theory and methods in these areas. SSHRC does not support clinical psychology research with a clear health intent, or research involving clinical trials.
- **CIHR** supports research in psychology that has direct relevance to, or ultimate impact on, human health, including mental health.
- **NSERC** supports applications related to fundamental psychological processes (i.e., neuroscience; cognitive science; sensation and perception; sensorimotor integration; learning and memory; cognition and language; sleep, arousal and the chrono-biological modulation of behaviour; statistical methods for analysis of psychological data), their underlying neural mechanisms, their development within individuals, and their evolutionary and ecological context.
- For more information, please consult the [Guidelines for the Eligibility of Applications in Psychology](#).



Interview

Policy on Sensitive Technology Research and Affiliations of Concern (STRAC Policy)

Philippe Villeneuve

Program Officer, Tri-Agency Institutional Programs Secretariat
Social Sciences and Humanities Research Council – Government of Canada

STRAC POLICY

- Grant applications that involve conducting research and related activities that aim to advance a sensitive technology research area will not be funded if any of the researchers involved in activities supported by the grant are affiliated with, or in receipt of funding or in-kind support from, a university, research institute or laboratory connected to military, national defence or state security entities that could pose a risk to Canada's national security.
- For further information: [Tri-agency guidance on the Policy on Sensitive Technology Research and Affiliations of Concern \(STRAC Policy\) - Research security \(nserc-crsng.gc.ca\)](#)



Two lists that operate in conjunction

- The STRAC Policy relies on the following two lists that **only operate in conjunction**.
- As lists are updated periodically, to address the evolving risk landscape, these updates will come into force **as new funding opportunities are launched**. Updates do not apply retroactively.

Sensitive Technology Research Areas (STRA)

- Composed of 11 high-level technology categories.
- The sub-categories indicate the specific **sensitive technology research areas** of concern.
- The specific concern is the **advancement** of a **technology during the course of the research**.
- Research that will use, but not advance, an existing technology is not within the scope of this policy.

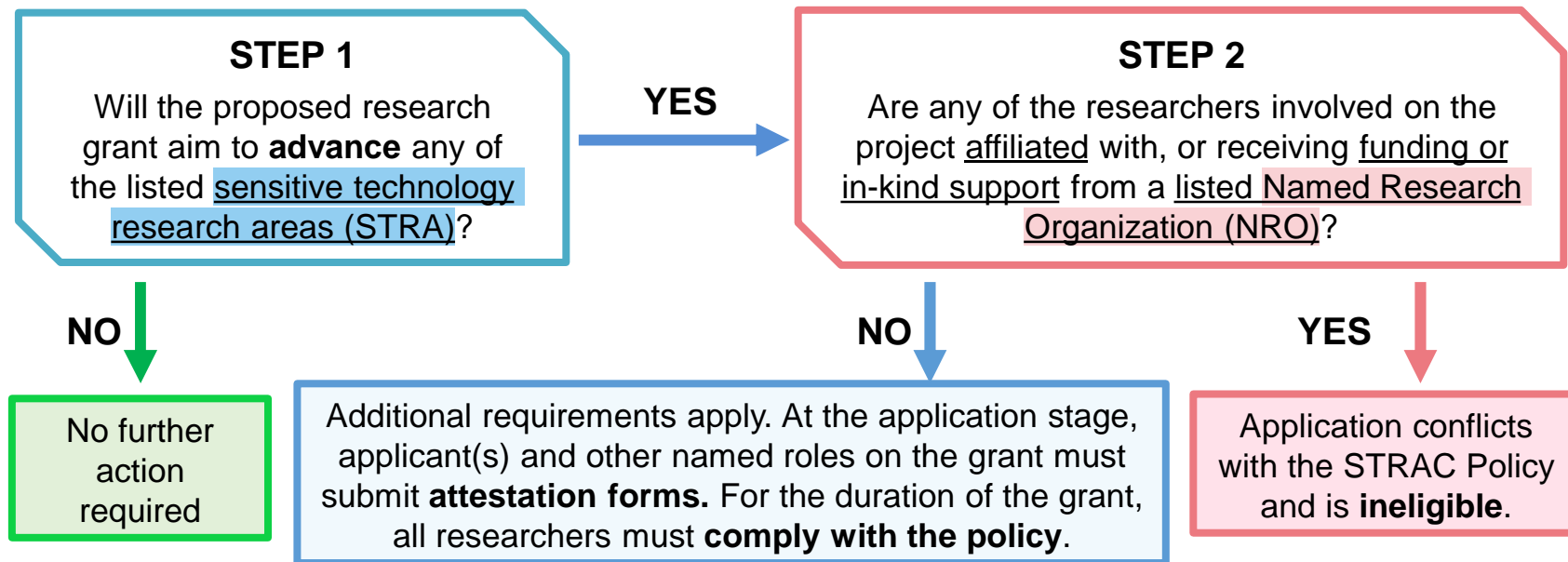
Named Research Organizations (NRO)

- Composed of **103 research organizations and institutions** that pose the highest risk to Canada's national security due to connections with military, national defence, and state security entities.
- The **STRAC policy concerns only the listed institutions**. It does not target any person or country.
- Researchers are encouraged to apply due diligence to mitigate risks associated with any collaboration or partnership in a sensitive technology research area – even if an institution is not included in the list.

STRAC POLICY

TWO-STEP PROCESS TO COMPLY WITH THE POLICY

When considering applying for a grant funding opportunity that is in-scope for the STRAC Policy, applicants will follow a **two-step process** to determine what requirements apply:



STRAC POLICY

- In the application form, applicants will be asked if the proposed research grant aims to advance a STRA. **If not, no further action is required.**
 - If so, applicants and other named roles (i.e., co-directors, co-applicants and collaborators) must complete attestation forms, available through a link in the application form, to certify they are not currently affiliated with an NRO.
 - For applications aiming to advance a STRA, the inclusion of completed attestation forms is an eligibility issue. However, whether an application aims to advance a STRA or not will **not** affect merit review.
-
- For further information: researchsecurity-securiterecherche@sshrc-crsh.gc.ca



COMMITTEE STRUCTURE

- **Discipline-based / Groups of disciplines**
- **Multi/Interdisciplinary**
- **Indigenous Research**



Committee Structure

Insight Grants	Committees
01	Philosophy
02	History
03	Fine arts, research-creation
04	Literature
05	Medieval, classics, religious studies
07	Economics
08	Sociology, demography and related fields
09	Geography, urban planning and related fields
10	Psychology
11	Political science and public administration
12	Education and social work
13	Anthropology and archaeology
14	Business, management and related fields
15	Linguistics and translation
16	Communications, media studies, gender studies, library and information science, related fields
17	Law and criminology
21	Indigenous research
22	Multidisciplinary or interdisciplinary humanities
23	Multidisciplinary or interdisciplinary social sciences
24	Tri-Agency Interdisciplinary Peer Review (TAIPR)

COMMITTEE SELECTION

- In the application form, applicants will be asked to select the committee that they consider most appropriate for the review of their proposal, taking into account the subject and disciplines involved.
- If the project falls under the competence of several committees, select the one closest to the main research discipline.
- For advice on choosing a committee, applicants can send us a summary of the proposal (one page) to: insightgrants@sshrc-crsh.gc.ca, before submitting it. Applicants can also consult [last IG's merit review committees list](#).

Inter/Multidisciplinary Applications

- Inter/Multidisciplinary Humanities
- Inter/Multidisciplinary Social Sciences
- Justification for requesting Inter/Multidisciplinary Evaluation (mandatory, max 1 page)
- For Indigenous, Inter/Multidisciplinary Humanities and Social Sciences committees: Relevant expertise may also be sought from the larger pool of Insight Grants committee membership.



INDIGENOUS RESEARCH (1)

SSHRC is committed to supporting and promoting social sciences and humanities research by and with Indigenous Peoples (First Nations, Métis and Inuit Peoples).

- Research in any field or discipline that is conducted by, grounded in or engaged with Indigenous Peoples, communities, societies or individuals, and their wisdom, cultures, experiences or knowledge systems, as expressed in their dynamic forms, past and present. Indigenous research can embrace the intellectual, physical, emotional and/or spiritual dimensions of knowledge in creative and interconnected relationships with people, places and the natural environment (See SSHRC's [full definition of Indigenous research](#)).
- **Committee 21** welcomes research proposals in any SSHRC-eligible academic field or domain of knowledge that is grounded in Indigenous worldviews or related to Indigenous Peoples.
 - Multidisciplinary committee composed of Indigenous and non-Indigenous members who are specialists in Indigenous research
- Indigenous Research in other committees: Project that involves Indigenous research, but applicant prefers a disciplinary-based committee that is more in line with the proposal and the researcher's profile.



INDIGENOUS RESEARCH (2) – KEY TOOLS

→ Guidelines for the Merit Review of Indigenous Research:

- Outline key concepts that are taken into consideration when assessing grant proposals
- Ensure that Indigenous research incorporating Indigenous knowledge systems is recognized as a scholarly contribution

→ Eligible Expenses:

- Tri-agency guideline on remuneration for Indigenous people participating in funded projects
- Tri-agency guide on financial administration (TAGFA)

INDIGENOUS RESEARCH (3)

The Guidelines for the Merit Review of Indigenous Research

- Outline key concepts that are taken into consideration when assessing grant proposals:
 - Indigenous or traditional knowledge
 - Reciprocity
 - Community
 - Respect, relevance and contributions
- Ensure that Indigenous research incorporating Indigenous knowledge systems (including ontologies, epistemologies and methodologies) is recognized as a scholarly contribution and meets SSHRC's standards of excellence.

INDIGENOUS RESEARCH (4)

—NEW! ELIGIBLE EXPENSES

- Elders, Knowledge Keepers, and Indigenous people who are affiliated with not-for-profit organizations and who are not already being compensated to conduct research and whose involvement is not part of a contractual obligation or professional service may receive compensation for their contributions and participation in agency-funded projects.
- Gifts, honoraria and incentives can be offered to an individual or group whose involvement in the funded research/activities is voluntary.
- Compensation may also refer to salary as defined and explained under TAGFA.
- In some cases, Indigenous team members who hold the role of **collaborator** may be compensated, provided that they meet the requirements listed above. Note that in such cases, the team member may not be delegated to authorize grant expenditures, and under no circumstances is the applicant eligible to be compensated from grant funds.
- See the following for more information:
 - [Tri-agency guideline on remuneration for Indigenous people participating in funded projects](#)
 - [Tri-agency guide on financial administration](#) (TAGFA)



Tri-Agency Interdisciplinary Peer Review Committee (1)

TAIPR Committee is a shared interdisciplinary peer review process and committee for research projects that include research areas supported by more than one agency.

- Applicants must apply via the agency responsible for the dominant component of their proposed research project: Insight Grants, Insight Development Grants, CIHR Project Grants, NSERC Discovery Horizons Grants.
- Relevant applications must represent research across advancing research areas belonging to **at least 2 of the councils**: (1) social sciences and humanities, (2) natural sciences and engineering, and (3) health and wellness, and clearly articulate interdisciplinary approaches.
- Relevant applications will be reviewed by a common interdisciplinary committee with broad expertise. Committee members are recruited from across research areas supported by all three agencies.



Tri-Agency Interdisciplinary Peer Review Committee (2): Evaluation

- This shared committee uses a harmonized evaluation process, including evaluation criteria, that differs from the usual Insight Grants process.
- Three equally weighted [evaluation criteria](#):
 - Merit of the Proposed Research
 - Anticipated Outcomes
 - Applicant(s) Record
- **How to submit:** submit to the agency that is responsible for the dominant research discipline or area. For SSHRC applicants, select Committee 24 on your application form and complete a one-page request for inter/multidisciplinary evaluation.
- For more information, please consult the committee's [landing page](#), [Committee Peer Review Guide](#) or send us an email.





OVERVIEW OF THE MERIT REVIEW PROCESS

- | Committee membership

- | Merit review components
and process

- | Evaluation criteria and
scoring

- | Communication of results
and feedback



Committee Membership

Experts drawn primarily from the academic community, as well as the public, private, and/or not-for-profit sectors, as required.

Number of committee members is determined based on the number of applications received.

Representation of the committee in terms of:

- research expertise (disciplinary or sub-disciplinary)
- sizes of institution
- geographical region
- language
- stage of career
- gender



Merit Review Components and Process

- 2 Committee members are assigned as **Readers**
- 2 **external assessments** per application (where possible)
 - Suggest Assessors (maximum 3, [Conflict of Interest](#))
 - Exclude evaluators
 - Merit review committees consider **but are not bound by** the judgments of the external assessors.

Calibration
Exercise

Submission of
preliminary
scores

Preliminary
ranking

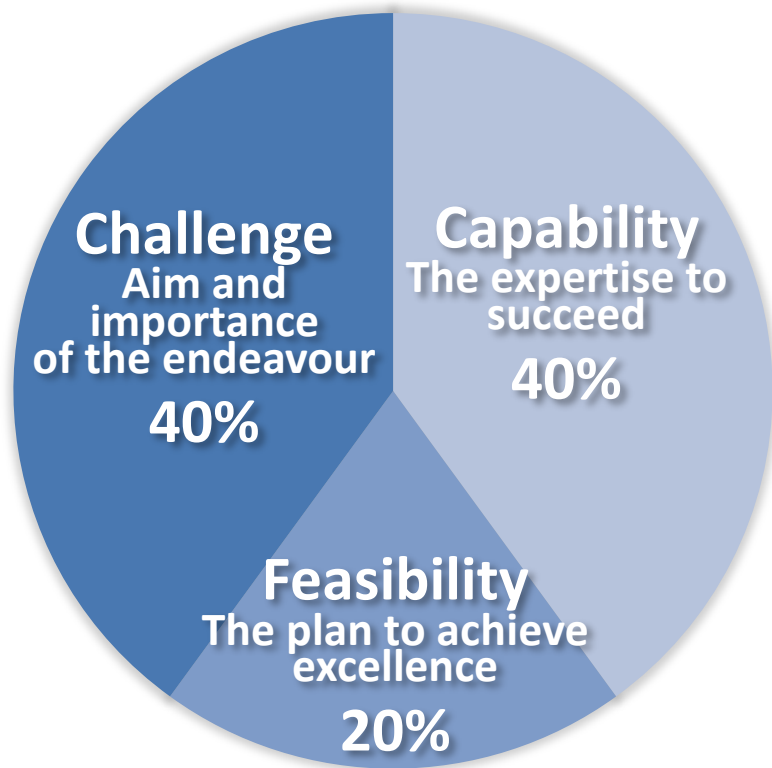
Flagging
process

Committee
discussion

Final
ranking



Evaluation and Scoring



NOTE	DESCRIPTION
5 – 6	Very good – excellent
4 – 4.9	Good – very good
3 – 3.9	Satisfactory – good
Below 3	Unsatisfactory



Communication of Results

Results communicated to individual applicants via the SSHRC Extranet.

Results packages contain:

- *Notice of Decision*
- *External assessments received*
- *Committee Evaluation Form (if discussed)*
- *Notice of Award (if applicable)*
- *Terms and Conditions of the Award (if applicable)*



Small Institutions

Peer review measures to support researchers at small institutions

- Institution size is considered in committee member recruitment process & efforts are made to obtain representation from diverse institutions from across Canada.
- Program Officers identify institution size during merit review.
- External evaluators (IG only) & committee members may use the “not applicable” category when evaluating the training components of an application.
 - Applicants should consider the breadth of research training, including undergraduate research training, when developing their research plans and considering their past contributions to research training.
- Small & Other Institutions – revised committee member guidelines & a list of institutions by size and type has been provided.



Joint Initiatives

- **Department of National Defence Research Initiative**
- **Sport Participation Research Initiative**
- **Canadian Foundation for Innovation Initiative**
- **MITACS Accelerate Joint Initiative**
- **Belmont Forum**



Department of National Defence Research Initiative

- Joint initiative between SSHRC and [Defence Research and Development Canada](#) (DRDC) to support social sciences and humanities research aligned with areas of interest in the Canadian Armed Forces (CAF) and the Department of National Defence.
- Fosters effective, evidence-based strategies, policies and programs in research areas identified by DRDC.
- Supplements valued at up to \$20,000 per year for three years, up to a total of \$60,000 maximum, may be awarded to successful Insight Grant recipients in addition to the annual value of the Insight Grant.
- For more information, visit [Department of National Defence Research Initiative 2025-26 description](#).



Sport Participation Research Initiative

- Joint Initiative between SSHRC and Sport Canada to support research on matters related to enhancing participation in sports and its outcomes in Canada.
- The Sport Participation Research Initiative (SPRI) offers supplements worth up to \$20,000 to successful Insight Grant recipients, in addition to the value of their grant.
- Relevance review conducted by Sport Canada once IG results are finalized.
- SPRI research grants are available to Insight Grant applicants and are worth up to a maximum of \$100,000 annually but cannot total more than \$250,000 in a three-year period.
- For more information visit the [2025-2026 SPRI description](#).



- Canada Foundation for Innovation (CFI) : funding of Infrastructure and research support.
- Submit separate proposals to SSHRC and to the CFI which will merge before they are assessed.
- Institutions can submit proposals requesting up to \$800,000 from the CFI, with a maximum total eligible cost of \$2 million. The CFI funds up to 40 percent of a project's eligible infrastructure costs. Institutions must secure the remaining 60 percent of the required funding.

MITACS ACCELERATE JOINT INITIATIVE (1)

- Mitacs Accelerate supports research internships for students and postdoctoral researchers at Canadian non-academic organizations (i.e., for-profit corporations, eligible not-for-profit corporations, municipalities, and hospitals). Each internship is cost-shared by Mitacs and the organization hosting the internship.
- Accelerate internships can be applied for simultaneously with a SSHRC application **and** during the life of an active SSHRC grant.
- To participate in the simultaneous submission, select “Mitacs Accelerate” in the SSHRC application form and submit a completed Accelerate application form to Mitacs within one week of the deadline of the SSHRC funding opportunity.



MITACS ACCELERATE JOINT INITIATIVE (2)

- SSHRC merit review committees will consider the associated Mitacs internships as part of the application's overall training and mentoring plans, but they will not be evaluating the Accelerate applications.
- Benefits: Strengthen training and mentoring plans; Access additional funding for student and postdoctoral resources; Reinforce engagement with partners and stakeholders; and Develop the skills and qualifications of students and postdoctoral researchers.
- To access the Accelerate application form, contact a [Mitacs Advisor](#), noting that you intend to apply through this joint initiative.



- Funding agencies of the following countries have committed to working proactively to enhance co-operation and co-ordination of global environmental change research:
 - *Australia, Brazil, Canada, France, Germany, India, Japan, South Africa, the United Kingdom and the United States.*
- Develop proposals that involve their international colleagues and partners that speak to the BF themes.
- SSHRC award holders working in areas related to the BF can use their existing research funds to participate as collaborators on applications being submitted to the Belmont Forum's calls for proposals.



Application Preparation



Social Sciences and Humanities
Research Council of Canada

Conseil de recherches en
sciences humaines du Canada

Canada

Application Preparation

- **Response to Previous Critiques**
 - Opportunity to justify a choice made with regard to research plan or explain how previous feedback was used to improve the current proposal
- **Summary of Proposed Research**
 - Important introduction; be clear, thorough, use accessible language
- **Detailed Description**
 - provide clear and precise objectives
 - include a complete and up-to-date literature review
 - outline theoretical / conceptual framework
 - ensure methodology makes sense in terms of objectives and personnel involved



Knowledge Mobilization Plan

- Be creative, ambitious and provide justification.
- Where feasible, reach out to the community or public.
- Describe how you will maximize the results of your research and ensure their results' sustainability. See Guidelines for Effective KM.



Tri-Agency Open Access Policy



- Peer-reviewed journal articles based on agency-funded research must be made freely accessible within 12 months of publication, via:
 - *Online repositories*
 - *Open-access journals*
- The Tri-Agencies also encourage the open publication of books. Open access fees for books are an eligible expense.
- Open access costs are assessed with the quality and appropriateness of the knowledge mobilization plans. Applicants should be precise and provide justification for the amount requested.
- A review of the Tri-Agency Open Access Policy on Publications is underway. The [draft, revised OA Policy](#) was published for public comment in February 2025. The revised OA Policy will be released by the end of 2025.



Description of Team and Student Training (1)

- Demonstrate the need for the team
- Describe each person's role and justify their inclusion in the research project
- Work assigned to students must provide meaningful research training opportunities and must contribute to the objectives of the research project
- Refer to [Guidelines for Effective Research Training](#)



Postdoctoral fellows' contribution and salaries

- The goal of Insight Program is to support research excellence. The principal investigator has primary responsibility for the overall intellectual direction of the research and research-related activity.

The salaries of highly qualified personnel, including postdoctoral researchers, should be properly justified within the context of the research program. If a disproportionately high % of requested budget is allocated to a postdoc salary that is not adequately justified, the committee may question the overall feasibility of the proposed research and may consider giving a lower score on the Feasibility.

- According to SSHRC's policies: Insight Grant funds cannot be used to remunerate team members (applicant, co-applicant or collaborator). This includes postdoctoral fellows serving in any of these capacities.



Budget and Budget Justification

- When submitting your budget, it is important to:
 - Be reasonable and justify proposed expenditures
 - Relate it clearly to research objectives and methodology
 - Describe other sources of funding
- Applications will automatically fail on the Feasibility criterion if the committee deems that the budget should be reduced by **50%** or more. In addition, the committee is asked to consider assigning a failing score on the Feasibility criterion if it deems that **30%** or more of the proposed budget is either not appropriate or not sufficiently justified.

[Tri-Agency Guide on Financial Administration and Guidelines](#) for [Cash and In-Kind Contributions](#).



Career interruptions and special circumstances in the last six years

SSHRC asks merit review committees to consider career interruptions and special circumstances that have affected candidates' and co-applicants' record of research.

- **Career interruptions:** when researchers are taken away from their research work for an extended period of time for health, administrative, family or other reasons, including reasons related to the COVID-19 pandemic.
- **Special circumstances** involve slowdowns in research productivity or any circumstances that impact the progression of academic careers in a distinctive way.
 - Applicants may upload one page in the Career Interruptions and Special Circumstances module of the application form.
 - Co-applicants may provide these details as a fifth page in their Research Contributions module.



Small Institutions

- Tips & Tricks for Applicants

- Applicants must describe the impacts of their circumstances in the career interruptions & special circumstances section of their CV (in the last six years):
 - indicate heavy teaching loads and/or administrative duties
 - impact on research and/or student training activities (e.g., lack of a graduate program at the institution, effects on supervisory opportunities)
- [SSHRC Manual for Merit Review Committee members](#) indicates that “in considering the budget’s appropriateness, members can take into account factors such as the type of institution.” For example, a researcher at a more isolated institution may need to assign a larger part of their budget to travel.
 - All expenses must still be well justified in the application.



Support research in official languages

SSHRC is committed to the equitable treatment of all applications submitted to the agency in either official language. SSHRC supports Canada's official languages and Official Language Minority Communities (OLMCs) by ensuring that:

- applications can be submitted in either official language;
- program officers support research community members in the official language of the community member's choice;
- fully bilingual committees in the merit review process;
- merit assessment can be carried out in both languages.

For program performance, SSHRC measures application and award rates, in line with tri-agency measures on equitable access to funding opportunities for designated groups. These figures have remained relatively stable for applications in French and English over the past ten years, with variations depending on the program.



Acfas and its French-language research assistance service (SARF)

What is it ?

SARF is a French-language research assistance service administered by Acfas. It provides research facilitation support to researchers from Canada's francophone minority communities in the preparation of their **funding applications submitted in French to the Tri-Council agency**. Its services include:

- *Strategic review and detailed assessment of funding applications submitted in French to **SSHRC funding opportunities and graduate-level scholarship programs***
- *Information webinars on funding programs*
- *External peer review service (for research grant applications)*

Who is it for ?

Faculty members and **graduate students** working in **francophone minority settings** in Canada (outside Quebec)

How to use it ?

SARF's services are offered to researchers by Acfas through **partnerships agreements** with post-secondary educational institutions

Current Partner Institutions



THE UNIVERSITY OF
WINNIPEG



For further inquiries, please contact:

Thierry Drapeau, PhD

Director

thierry.drapeau@acfas.ca

514-849-0045, poste 236

<https://www.acfas.ca/communaute/sarf>

SUBMITTING YOUR APPLICATION (1)

BE SURE TO START EARLY IF YOU HAVE A TEAM

Applicant

1. Complete and verify application and SSHRC CV.
2. Ensure all participants have included relevant attachments.
3. Submit application for institutional approval.

Co-applicant

1. Create and verify SSHRC CV.
2. Accept the invitation and upload Research Contributions (PDF).

Collaborator

1. Fill out a profile.
2. Accept invitation.

Team members' CVs will hold up the whole application if they are not complete



SUBMITTING YOUR APPLICATION (2)

- Complete all mandatory fields
- Attach all mandatory electronic uploads
- Verify and preview your application
- Click “Submit” for institutional approval

↘ Detailed application Instructions found here:
[Insight Grants: October 2025 Competition—
Applicant Instructions](#)

- Institutions forward applications to SSHRC

Research or financial administrator responsibilities: SSHRC expects research administration to validate the information contained in the application. By forwarding the application, the administrator also certifies that the applicant is affiliated with the institution and that the institution is willing to administer any grant received according to SSHRC policies.

- Leave enough time

Note: PhD students and Postdoctoral Fellows may submit their application directly to SSHRC. SSHRC recommends that they inform the Office of Research Services of the institution where they propose to hold the award and confirm that it is willing to administer the award early in the process.



THANK YOU!

INSIGHT GRANTS

TEL.: 1-855-275-2861

EMAIL: INSIGHTGRANTS@SSHRC-CRSH.GC.CA

TECHNICAL SUPPORT

TEL.: 613-995-4273

EMAIL: WEBGRANT@SSHRC-CRSH.GC.CA

STAY CONNECTED WITH SSHRC

➤ Visit our website: <https://sshrc-crsh.canada.ca>

➤ Subscribe to our eNewsletter: [Dialogue](#)



Social Sciences and Humanities
Research Council of Canada

Conseil de recherches en
sciences humaines du Canada

Canada