



# Collaborative Research and Training Experience (CREATE) Program

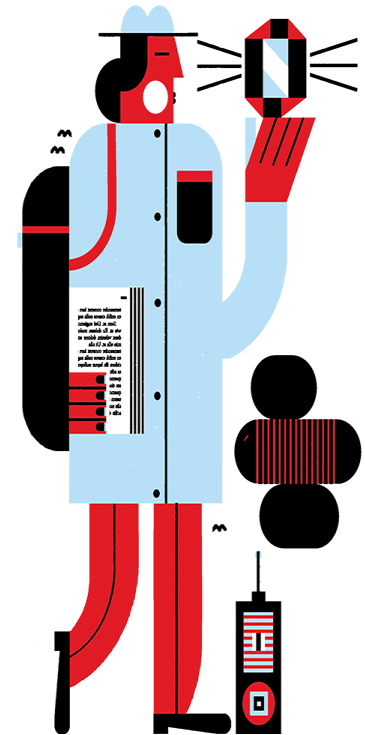
Information session for prospective applicants

February 10, 2022

# Welcome

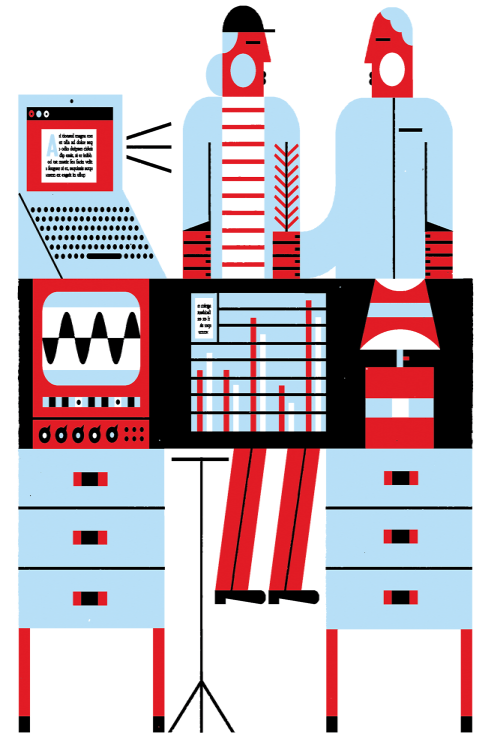
- Manager: Teresa Jurewicz
- Program Officers:
  - Guy Faubert (pre-award)
  - Samantha Gollop (post-award)
- Program Assistant:
  - Valerie Bloom

**[CREATE@NSERC-CRSNG.GC.CA](mailto:CREATE@NSERC-CRSNG.GC.CA)**

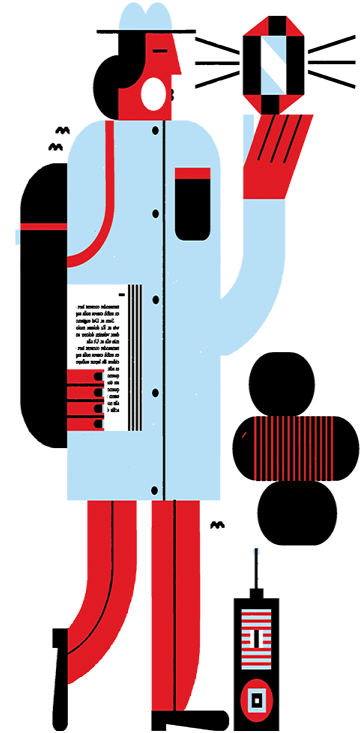


# Table of contents

1. Program overview
2. Application procedures
3. Competition statistics and other information



# 1. Program Overview



## Program overview

# Program objectives

CREATE supports the training and mentoring of students and postdoctoral fellows from Canada and abroad through the development of innovative training programs that:

- Encourage collaborative and integrative approaches that address significant scientific challenges
- Facilitate the transition of new researchers from trainees to productive employees in the Canadian workforce

## Program overview

# Program objectives

CREATE encourages

- Enriched training and mentoring experiences
- Improved job readiness
- Professional skills development
- Industrial collaboration
- Student mobility
- Interdisciplinary research

## Program overview

# Program objectives

### Qualities of successful CREATE Initiatives

- Innovative nature
- Rich training and mentoring environment
- Strong delivery of professional skills along with mechanisms to ensure all trainees fully benefit and participate
- Capacity to raise the standard for best practices in training and mentoring
- Equity, diversity and inclusiveness of research team and trainees
- Promoting collaboration and international awareness



## Program overview

# Value of grant

- Year 1: Normally, \$150,000 ( $\pm$  \$50,000)
  - Years 2 – 6: Normally, \$300,000 ( $\pm$  \$50,000) per year
- 
- Total: up to \$1,650,000 over 6 years
  - Non renewable
  - Start Date: April 1 default or Sep 1 by request

## Program overview

# Expectations

- **Year 3-6 funding is dependent on positive performance evaluations by NSERC.**
- 2 progress reports and a final report are required.
- Must demonstrate that proposed objectives, training elements (especially professional skills), HQP targets, EDI actions, etc., are being met.
- **i.e., applicants are held accountable and must follow through on what is promised in the proposals.**

## Program overview

# Allowable expenses

- At least 80% to trainee stipends
  - Up to 30% of this may go toward non-NSE trainees
- Remaining 20% may be used for..
  - Trainee travel (conferences, exchanges, internships, etc).
  - Training program administration (e.g. salary of program coordinator)
  - Dissemination of training materials
  - etc.
- Note that travel costs of the applicants, co-applicants, collaborators, program committee members, and project coordinators are not eligible.

## Program overview

# Trainee stipends

- No minimum or maximum
- May be complemented by other sources
  - Supervisors
  - Collaborators
  - Scholarships
- A stipend from CREATE is not a requirement for trainee participation in the initiative
- Emphasis of the initiative must be on graduate students, but undergraduate and postdoctoral trainees may also be supported

## Program overview

# Teams leading CREATE Initiatives

- A complementary group of researchers
- From eligible Canadian universities
- For multi-university applications: must have at least one co-applicant involved for trainees at that institution to be eligible to receive CREATE stipends
- Work collaboratively to offer a defined training program to a group of trainees

## Program overview

# Teams leading CREATE Initiatives

- Lead applicant must be from an NSERC-supported field at an [NSERC-eligible university](#)
- At least **70%** of the group of co-applicants must be in NSE (co-applicants may be from other fields)
- A researcher can be involved in a maximum of two initiatives at any given time and a maximum of one as an applicant

## Program overview

# Program committee

- Program committee (PC) consists of a variety of stake holders, e.g.
  - Potential future employers of graduates, collaborators, curriculum developers, trainees
- Program evaluation and guidance
- Refer to the [program committee guidelines](#) webpage for more information

## Program overview

# Covid-19

- Applicants should discuss the Covid-19 impacts and mitigation strategies (Letter of Intent and application).
- Please refer to [NSERC's Impacts of the COVID-19 pandemic on research: NEW guidelines for NSERC's community](#) webpage for more information.



## Program Overview

# Equity, diversity and inclusion

CREATE initiatives are expected to increase the inclusion and advancement of under-represented groups in the natural sciences and engineering as one way to enhance excellence in research and training.

- Team (self-ID questionnaire)
- Program Committee
- HQP
- [Guide for Applicants: Considering equity, diversity and inclusion in your application](#)

## Program overview

# New this year

- Security provisions: Research and establishing and/or continuing partnerships with national, international and multinational organizations
- Quantum Call: NSERC will fund at least three CREATE initiatives through the Government of Canada's Budget 2021 launch of a National Quantum Strategy
  - Quantum call LOIs are not included in the university quota
  - Limit of 2 Quantum call LOIs per university
- LOI quotas: Adjusted for a very small number of universities

## Program overview

# Streams

- **Regular stream** may involve any collaborations: academic/government/industry/NGO, Canadian/international
- **International Stream** Germany's DFG-IRTG for collaboration with German researchers. Funding aligned with DFG-IRTG program duration: up to 9 years instead of 6 years for regular or industrial stream CREATE (same grant value). Contact NSERC for more information.
- **Industrial stream** requires industrial participation
- Applications to the DFG-IRTG and Industrial streams are not evaluated separately from the regular stream applications

## Program overview

# Industrial Stream

Up to 50% of the CREATE grants will be awarded to industrial stream applications.

- Increased emphasis on preparing trainees for non-academic careers; enhanced academic-industrial collaboration
- Requires participation of at least one industrial collaborator on the program committee
- Requires industrial internships for all trainees of 3-4 months for M.Sc. and 7-8 months for Ph.D.
- The industrial internship is not mandatory for postdoctoral fellows; however, it is encouraged. The recommended duration is a minimum of 20% of their fellowship (e.g., 4 months).

## Program overview

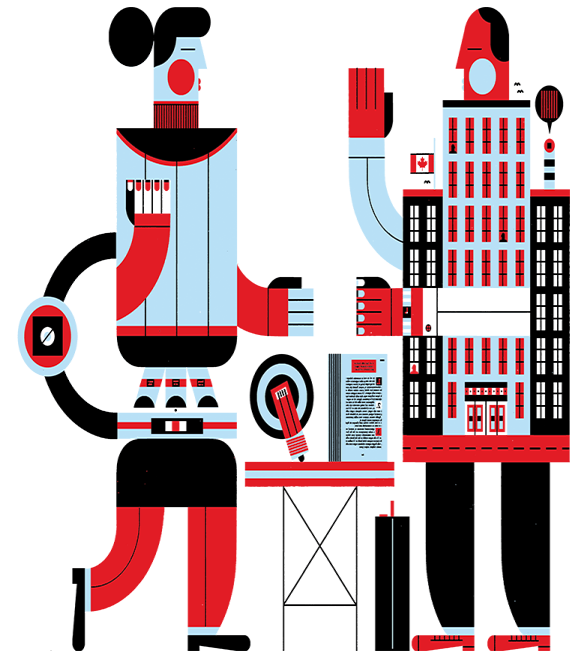
# Industrial collaborators

- Canadian-based businesses, able to exploit the research results for the economic benefit of Canada.
- International companies eligible if activities related to the proposed research take place in Canada (e.g. R&D, manufacturing); if their participation will result in a benefit to Canada.
- Due to conflict of interest considerations, trainee internships at companies owned wholly or in part by the applicant or by a co-applicant are prohibited.

## 2. Application Procedures

Phase 1: **Letter of Intent (LOI)**

Phase 2: **Application** (if invited)



## Application procedures

# Phase 1: Letter of Intent

## Selection process & criteria

1. Internal selection at university (quota based)
2. CREATE Selection Committee
  - Merit of proposed training program (60%)
  - Excellence of the team of researchers (40%)

## Application procedures

# Phase 1: Letter of Intent

## Form 187: Letter of Intent to Apply for a CREATE grant

- List co-applicants (min 1, max 10): All must complete the self-ID questionnaire.
- Collaborators
- External Reviewers suggestions (8)
  - Including 2 from Canada and at least one from abroad
  - LOIs are NOT sent for external review



## Application procedures

# Phase 1: Letter of Intent

- Personal Data Form (Form 100) – applicant only
- Letter from VP Research of the lead university

## Application procedures

# Phase 1: Letter of Intent

## Outline of Training Program (max 2 pages)

- Objectives, novelty, how trainees would be better prepared for careers, involvement of stakeholders, description of potential future employers, assessment of job prospects for trainees, and Covid-19
- One additional page for:
  - Previous CREATE grantees and co-grantees must clearly describe how this application differs from those previously funded.
  - Researchers who are applying in a research area already supported by other active CREATE grants must clearly describe how this application differs from those already funded.

## Application procedures

# Phase 1: Letter of Intent

## Excellence of Proposed Team (max 3 pages)

- Complementarities
  - Expertise
  - Roles, responsibilities
  - Training and mentoring experience
- } EDI should be considered

## Application procedures

# Phase 2: Full application (only if invited)

## Selection process & criteria

- Merit of proposed training program (50%)
- Excellence of the research team (25%)
- Program management and sustainability (25%)

## Application procedures

### **Phase 2: full application**

- Personal data form (Form 100) for the applicant
- Personal data form (Form 100) or CCV for all co-applicants (max 10)
- One letter from the lead applicant's university
  - Support, financial commitments
- Up to 3 letters from collaborators, if applicable
  - Nature of support

## Application procedures

# Phase 2: Full application

## Form 102 – Application for a CREATE grant

- Application profile
- Plain language summary of proposal
- Co-applicants and collaborators
- Proposed expenditures

## Application procedures

# Phase 2: Full application

## Research training program proposal

- Free-form, 14 pages + 1 page for references
- Objectives
- Elements of the training program
- Estimated number of trainees
- Job prospects
- Program Committee
- List of deliverables
- Covid-19

## Application procedures

### Phase 2: Full application

- Budget justification (free form, 2 pages)
- Support from other sources (free form, 2 pages)
- Maximum 1 Letter of support from lead university:
  - List of all contributions from the university
  - Describe the details of support
  - Involvement in the training program
  - Plans to ensure sustainability



## Application procedures

### Additional requirements for industrial stream applications

- Skills identified as needed for a career in industry
- Description of improved job-readiness for industry sector
- Details about trainee internships
- Confirmation that **all** graduate trainees will complete an **industrial** internship of the minimum duration

## Application procedures

# Additional application requirements for industrial stream

## Letter of Intent (phase 1)

- ONE e-mail/letter from industry partner confirming:
  - Willingness to participate on the program committee
  - Intent to host internships
  - A support letter can come from an industry consortium, but it is preferable that one or two companies confirm their support. A formal commitment from individual companies will be required at the application phase.

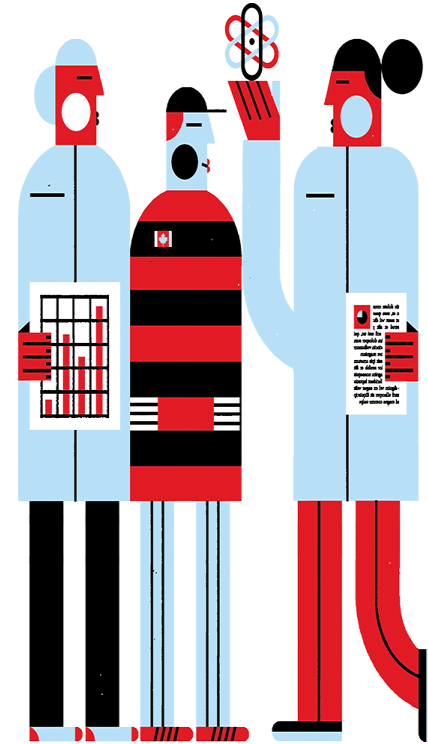
## Application procedures

# Additional application requirements for industrial stream

## Application (phase 2)

- Max 3 letter(s) from industry partner(s) confirming
  - Commitment to participate on the program committee, with confirmed name of the industrial member
  - Commitment to host trainee internships of at least 3-4 months for M.Sc. And 7-8 months for Ph.D. Agreements must be in place and should be guaranteed (may be dependent on success of application).

# 3. Competition statistics and other information



# Competition Statistics

	2017	2018	2019	2020	2021	2022
LOIs received:	114	112	126	125	118	123
Candidates invited:	53	55	50	55	38	43
Applications received:	51	53	50	53	37	42
Grants awarded:	17	18	18	15	13	TBD

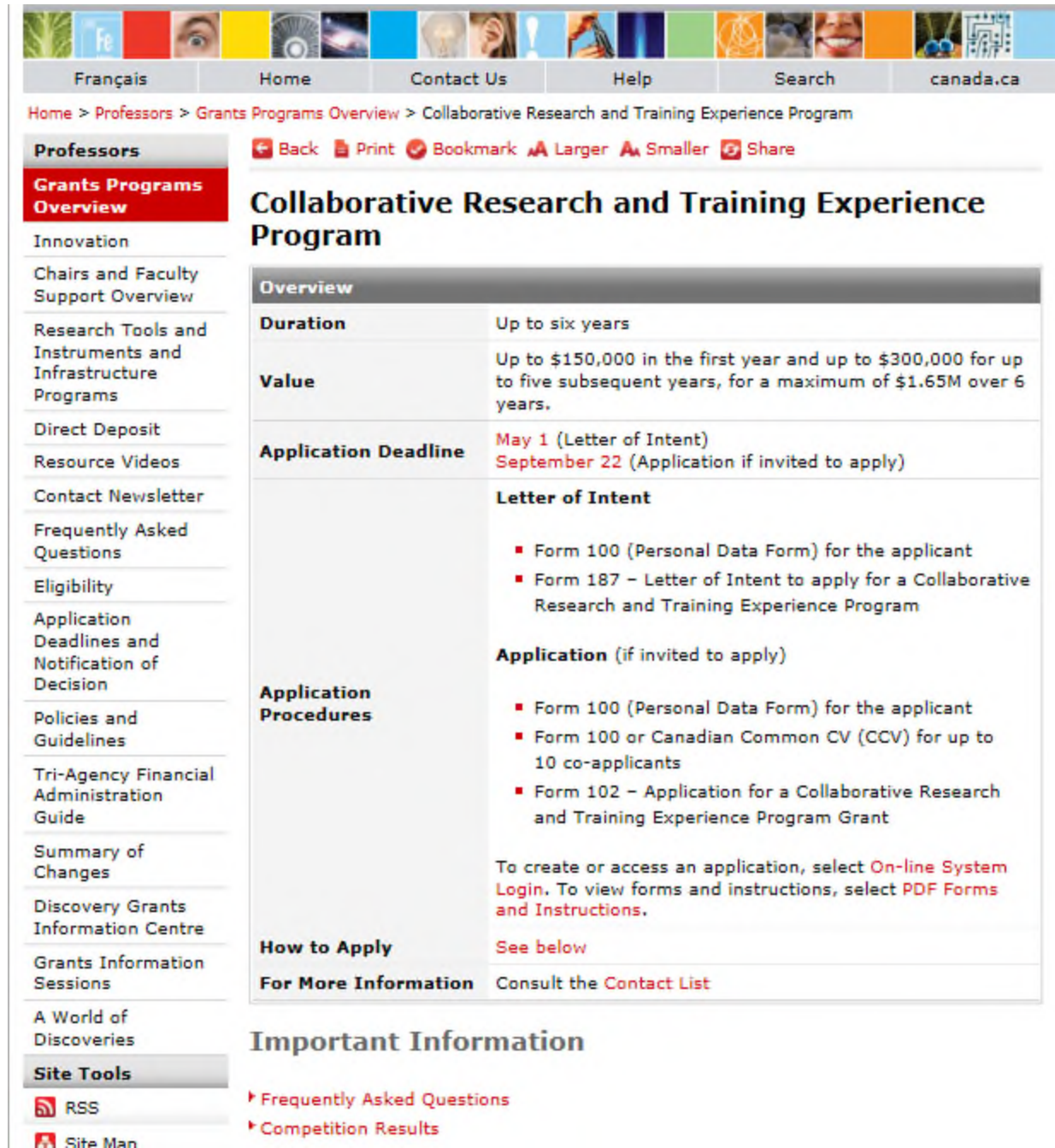
Other information

# Important Dates

- March/April 2022: Letter of Intent deadline (Univ.)
- May 1, 2022: Letter of Intent deadline (NSERC)
- June 30, 2022: Invitation to submit an application
- September 22, 2022: Application deadline (NSERC)
- March 2023: Notification of results

# CREATE Program description:

[http://www.nserc-crsng.gc.ca/professors-professeurs/grants-subs/create-foncer\\_eng.asp](http://www.nserc-crsng.gc.ca/professors-professeurs/grants-subs/create-foncer_eng.asp)



Frçais Home Contact Us Help Search canada.ca

Home > Professors > Grants Programs Overview > Collaborative Research and Training Experience Program

Professors  
**Grants Programs Overview**  
Innovation  
Chairs and Faculty Support Overview  
Research Tools and Infrastructure Programs  
Direct Deposit  
Resource Videos  
Contact Newsletter  
Frequently Asked Questions  
Eligibility  
Application Deadlines and Notification of Decision  
Policies and Guidelines  
Tri-Agency Financial Administration Guide  
Summary of Changes  
Discovery Grants Information Centre  
Grants Information Sessions  
A World of Discoveries

Site Tools  
RSS  
Site Map

Back Print Bookmark Larger Smaller Share

## Collaborative Research and Training Experience Program

Overview	
<b>Duration</b>	Up to six years
<b>Value</b>	Up to \$150,000 in the first year and up to \$300,000 for up to five subsequent years, for a maximum of \$1.65M over 6 years.
<b>Application Deadline</b>	May 1 (Letter of Intent) September 22 (Application if invited to apply)
<b>Application Procedures</b>	<b>Letter of Intent</b> <ul style="list-style-type: none"><li>Form 100 (Personal Data Form) for the applicant</li><li>Form 187 – Letter of Intent to apply for a Collaborative Research and Training Experience Program</li></ul> <b>Application</b> (if invited to apply) <ul style="list-style-type: none"><li>Form 100 (Personal Data Form) for the applicant</li><li>Form 100 or Canadian Common CV (CCV) for up to 10 co-applicants</li><li>Form 102 – Application for a Collaborative Research and Training Experience Program Grant</li></ul> To create or access an application, select <a href="#">On-line System Login</a> . To view forms and instructions, select <a href="#">PDF Forms and Instructions</a> .
<b>How to Apply</b>	<a href="#">See below</a>
<b>For More Information</b>	Consult the <a href="#">Contact List</a>

## Important Information

- [Frequently Asked Questions](#)
- [Competition Results](#)

Other information

# More Information

- [Program description](#)
- [FAQ](#)
- Your university's research grant office
- The NSERC CREATE Team
  - E-mail: [CREATE@nserc-crsng.gc.ca](mailto:CREATE@nserc-crsng.gc.ca)