



The UNIVERSITY of WESTERN ONTARIO

MINUTES OF THE MEETING OF SENATE

April 13, 2012

The meeting was held at 1:30 p.m. in Room 1R40, Richard Ivey School of Business.

SENATORS: 73

J. Aitken Schermer	C. Hanycz	J. O'Brien
J. Bend	N. Heapy	J. Orange
I. Birrell	J. Holmes	A. Parachin
M. Blagrove	A. Hrymak	V. Prabhu
J. Boulter	G. Hunter	C. Rice
K. Campbell	R. Klassen	P. Ryan
T. Carmichael	J. Knowles	J. Santucci
A. Chakma	G. Kulczycki	V. Schwean
M. Ciniello	H. Lagerlund	I. Scott
W. Cracknell	J. Lamarche	D. Stanford
L. Davies	B. Leipert	C. Stephenson
J. Deakin	A. Li	D. Sutherland
C. Dean	S. Lupker	D. Sylvester
B. Duncan	S. Macfie	R. Telfer
W. Dunn	S. Madhavji	A. Thind
L. Elliott	J. Matthews	M. Tiedemann
J. Etherington	P. McKenzie	E. Uberig
C. Farber	M. McNay	K. Veblen
A. Fearnall	R. Mercer	A. Watson
N. Ferris	L. Miller	R. Watson
K. Foullong	A. Nelson	J. Weese
J. Garnett	S. Nemirovsky	G. West
K. Goldthorp	D. Neufeld	M. Wilson
R. Graham	T. Newson	
J. Hatch	C. Nolan	

Observers: R. Chelladurai, L. Gribbon, B. Traister, A. Weedon

By Invitation: C. Dunbar, M. Workentin

S.12-67

MINUTES OF THE PREVIOUS MEETING

The Minutes of the meeting of March 23, 2012 were approved as circulated.

S.12-68 **REPORT OF THE PRESIDENT**

The President's report consisted of the following items: updates on the Provincial and Federal budgets, the IBM Cloud Computing Partnership, and the recipients of the Humanitarian Awards, Distinguished University Professors, Hellmuth Prize winners, and the Killiam Prize winner. Overhead slides used to highlight his presentation are attached as [Appendix 1](#).

SENATE COMMITTEE ON UNIVERSITY PLANNING [EXHIBIT I]

S.12-69 **2012-13 University Operating and Capital Budgets**

It was moved by D. Sylvester, seconded by H. Lagerlund,

That Senate provide advice to the Board of Governors, through the President and Vice-Chancellor, recommending approval of the 2012-13 University Operating and Capital Budgets (Annex 1).

Dr. J. Deakin, Provost, presented the 2012-13 University Operating and Capital Budgets, the second year of the four-year budget cycle, detailed in Exhibit I, Annex 1. Her presentation highlighted the planning and budgetary context, operating revenues for the next four years, new initiatives and priorities, operating revenues, and expenditures, including recommendations for faculties, and support units, university-wide expenditures, one-time expenditures, operating reserve forecast and an overview of the 2012-13 capital budget. Overhead slides used in the presentation are attached as [Appendix 2](#).

Revenues for 2012-13 are projected to be \$630.2 million with \$636.4 million in expenditures. The operating reserve will be at \$44.1 million at the end of 2011-12 and \$37.9 million at the end of 2012-13. The operating reserve is projected to be \$4.6 million at the end of the four-year budget cycle, 2014-15, which is above the Board of Governors' mandated requirement of \$2.5 million.

Discussion included the following points/concerns:

A Senator asked what the benefits are of implementing a 4.5% tuition fee increase, noting that figure is higher than inflation. Dr. Deakin explained that in the absence of knowing what is going to happen next year regarding the government's tuition framework and in the interest of financial planning, the administration sought to be prudent and stay within the government's tuition framework vis-a-vis tuition increases. She reminded Senate that revenue generated from tuition increases flows back to the faculties to address the costs of providing the best student experience. \$6.4 million will go to undergraduate scholarships while tuition set-aside for need-based support is also going up to \$13.1 million.

Addressing questions regarding support for mental health initiatives, Ms. Kulczycki remarked that no new allocations are included in this year's budget as units are continuing to work through last year's \$300,000 allocated in support of mental health related initiatives. A coordinator, case manager and psychologist have been hired.

A Senator asked for clarification of the reserve fund relative to a "comfort zone." Dr. Deakin reiterated that the Board-mandated minimum reserve level is \$2.5 million and at the end of this four-year budget cycle the reserve is projected to be \$4.6 million. The operating reserve is reviewed annually as part of the budget planning process and throughout the year budget adjustments can be made if needed.

The following documents were received for information:

- Student Fee Funded Units, Ancillaries, Academic Support Units, and Associated Companies (Annex 3).

- Program Specific Tuition and Other Supplemental Fees (Annex 2).

The question was called and CARRIED.

Dr. Chakma acknowledged the efforts of many individuals involved in the preparation of the budget document.

S.12-70 **Richard Ivey School of Business: Suncor Chair in Energy Policy**

It was moved by C. Stephenson, seconded by L. Miller,

That the terms for the Suncor Chair in Energy Policy be approved as detailed in Exhibit I, item 2.

CARRIED

REPORT OF THE OPERATIONS/AGENDA COMMITTEE [EXHIBIT II]

S.12-71 **Senate Membership – Faculty Constituencies**

It was moved by T. Carmichael, seconded by A. Watson,

That the following nominees be appointed to Senate for the term of July 1, 2012 – June 30, 2014 in accordance with the Senate election procedures for the filling of vacancies:

Arts and Humanities	Alison Conway (English) John Hatch* (Visual Arts) Henrik Lagerlund* (Philosophy)
Brescia University College	John Mitchell*
Health Sciences	Chris Lee (Health Studies) Robert Vigars (Kinesiology)
Huron University College	Nelson Heapy*
Info and Media Studies	Amanda Grzyb
King's University College	Patrick Ryan*
Law	Randal Graham*
Music	Edmund Goehring
Science	Robert Mercer* (Computer Science) Masoud Khalkhali (Mathematics) Mahi R. Singh* (Physics and Astronomy)
Social Science	Mitch Rothstein (MOS) Jeffrey Hopkins (Geography) Adriana Premat (Anthropology)

*Reappointment

CARRIED

S.12-72 **Senate Membership – School of Graduate and Postdoctoral Studies, Arts and Humanities and Music Constituency**

It was moved by T. Carmichael, seconded by L. Miller,

That the seat held by Russell Poole, faculty representative on Senate for SGPS – Arts and Humanities and Music constituency, be declared vacant effective June 1, 2012 as a result of his resignation and that Christopher Brown, Department of Classical Studies be elected to complete his term until June 30, 2013.

CARRIED

S.12-73 **Senate Membership – Faculty of Social Science Constituency**

It was moved by T. Carmichael, seconded by B. Duncan,

That the seat held by Al Slivinski, faculty representative on Senate for the Faculty of Social Science, be declared vacant as a result of his resignation and that Jeffrey Hopkins, Department of Geography be elected to complete his term until June 30, 2012.

CARRIED

S.12-74 **Nominating Committee Membership**

The candidates proposed for the Nominating Committee, as outlined in [Exhibit II](#), were elected by acclamation.

S.12-75 **REPORT OF THE NOMINATING COMMITTEE [EXHIBIT III]**

The candidates proposed by the Nominating Committee in [Exhibit III](#) were elected by acclamation to the following positions/committees:

- Vice-Chair of Senate
- Operations/Agenda Committee
- Senate Committee on Academic Policy and Awards
- Senate Committee on University Planning
- University Research Board
- University Council on Animal Care
- Honorary Degrees Committee
- Senate Review Board Academic
- Distinguished University Professor Selection Committee
- Faculty Scholar Selection Committee
- Nominating Subcommittee to Nominate a Senator from the General Community
- McIntosh Gallery Committee
- Advisory Committee for the Ombuds Office
- Council of the Faculty of Information and Media Studies: Senate Representative from the General Community
- Academic Colleague
- Board of Governors
- Decanal Selection Committee – Faculty of Social Science
- Selection Committee for a Vice-Provost (Graduate and Postdoctoral Studies)

REPORT OF THE SENATE COMMITTEE ON ACADEMIC POLICY AND AWARDS [Exhibit IV]

S.12-76 **Faculty of Arts and Humanities: Introduction of a Minor in Medieval Studies and “Medieval Studies” as a Course Designation**

It was moved by D. Sylvester, seconded by D. Sutherland,

That a Minor in Medieval Studies, and the new course designation “Medieval Studies,” be introduced in the Faculty of Arts and Humanities, effective September 1, 2012, as detailed in Exhibit IV, item 1.

CARRIED

S.12-77 **Faculty of Education: Revisions to the Admission Requirements for the Primary/Junior French as a Second Language Program**

It was moved by B. Duncan, seconded by D. Sutherland,

That the admission requirements for the Primary/Junior French as a Second Language Program be revised as set out in Exhibit IV, item 2, effective September 1, 2012.

CARRIED

S.12-78 **Faculty of Education: Revision to the English Language Proficiency Requirements for BEd/DipEd Programs**

It was moved by B. Duncan, seconded by D. Sutherland,

That the English language proficiency requirements for BEd/DipEd programs be revised as set out in Exhibit IV, item 3, effective September 1, 2012.

CARRIED

S.12-79 **Faculties of Science, Social Science and Schulich School of Medicine & Dentistry: Withdrawal of the Honors Specialization in Physiology and Psychology (BSc) Module**

It was moved by J. Bend, seconded by A. Watson,

That admission to the Honors Specialization in Physiology and Psychology (BSc) module be discontinued, effective September 1, 2012;

That students enrolled in the module prior to September 1, 2012 be permitted to continue with the understanding that they must complete the requirements of the module prior to August 31, 2016; and,

That the module be withdrawn effective September 1, 2016.

CARRIED

S.12-80 **Faculty of Social Science: Introduction of a Specialization in Geography**

It was moved by D. Sutherland, seconded by L. Miller,

That a Specialization in Geography, detailed in Exhibit IV, item 5, be introduced in the Faculty of Social Science, effective September 1, 2012.

CARRIED

S.12-81 **Huron University College: Management and Organizational Studies (MOS): Introduction of an Honors Specialization and a Specialization in Accounting**

It was moved by N. Heapy, seconded by D. Stanford,

That, effective September 1, 2012, an Honors Specialization in Accounting and a Specialization in Accounting, detailed in Exhibit IV, item 6, be introduced in the Management and Organizational Studies (MOS) program at Huron University College.

CARRIED

S.12-82 **School of Graduate and Postdoctoral Studies: Introduction of the Professional Master of Science (MSc) Program in Clinical Medical Biophysics**

It was moved by A. Watson, seconded by C. Nolan,

That pending Quality Council approval, the professional Master of Science (MSc) in Clinical Medical Biophysics program be introduced in the School of Graduate and Postdoctoral Studies as set out in Exhibit IV, Appendix 1, effective May 1, 2012.

CARRIED

S.12-83 **School of Graduate and Postdoctoral Studies: Revisions to the PhD in Music (Music Education)**

It was moved by L. Miller, seconded by K. Veblen,

That effective May 1, 2012, the current PhD in Music (Music Education) be revised to streamline program requirements and to introduce two required courses and a new (elective) PhD Independent Reading and Research Course, as outlined in Exhibit IV, item 8.

CARRIED

S.12-84 **Policy on Adding and Dropping Courses: Revisions to Drop Deadlines for Undergraduate Courses**

It was moved by B. Duncan, seconded by S. Madhavji,

That Senate approve the revisions to the policy on Adding and Dropping Courses as set out in Exhibit IV, item 9, effective September 1, 2012.

CARRIED

S.12-85 **Introduction of a "Blended Course" Delivery Method for Undergraduate Courses**

It was moved by S. Nemirovsky, seconded by D. Sutherland,

That a "blended course" delivery method be introduced for undergraduate courses, effective March 1, 2013.

CARRIED

S.12-86 **Richard Ivey School of Business and Faculty of Law: Revisions to the HBA/JD Combined Degree Program**

It was moved by D. Neufeld, seconded by I. Scott,

That the HBA/JD Combined Degree Program be revised as set out in Exhibit IV, item 11, effective September 1, 2012.

CARRIED

S.12-87 **Report of the Subcommittee on Program Review – Graduate (SUPR-G): Review of Programs in the Department of Medical Biophysics**

Senate was informed that SCAPA has approved the recommendations of the Subcommittee on Program Review – Graduate (SUPR-G) with respect to the review of the MSc and PhD in Medical Biophysics and MSc Clinical Medical Biophysics as detailed in Exhibit IV, Appendix 2.

S.12-88 **New Scholarships, Awards and Bursaries**

SCAPA has approved on behalf of the Senate, the Terms of Reference for the following new scholarships, awards and bursaries for recommendation to the Board of Governors through the President & Vice-Chancellor:

Marion E. MacLeod Ontario Graduate Scholarship (School of Graduate and Postdoctoral Studies)
Helen Fasken Graduate Nursing Bursary (School of Graduate and Postdoctoral Studies, Nursing)
William C. and Jean Hawke Entrance Scholarship (Any Undergraduate Program)
Henning Rasmussen Graduate Bursary (School of Graduate and Postdoctoral Studies, Applied Mathematics)
Pioneer Sandy Smibert Award (Faculty of Social Science, History)
Norman Craig Brown QC Continuing Bursary in Law (Faculty of Law)

S.12-89 **Schulich School of Medicine and Dentistry: Honors Specialization in Neuroscience as a BSc Degree to be offered by the Schulich School of Medicine & Dentistry**

In December 2011, Senate approved the introduction of the new Honors Specialization in Neuroscience, leading to a Bachelor of Science in the Schulich School of Medicine & Dentistry. Currently, the Schulich School of Medicine & Dentistry offers the Bachelor of Medical Science (BMSc) jointly with the Faculty of Science. Basic Science departments in the Schulich School of Medicine & Dentistry also offer Bachelor of Science (BSc) programs; however, these degrees can be conferred only through the Faculty of Science or the Faculty of Social Science. The new Honors Specialization in Neuroscience (BSc) is intended to replace the Honors Specialization in Physiology and Psychology (BSc) offered through the Faculty of Social Science. (<http://www.westerncalendar.uwo.ca/2012/pg750.html>)

Representatives of the Schulich School of Medicine & Dentistry, the Faculty of Science and the Faculty of Social Science have agreed that conferral of this BSc degree by Schulich is on an exceptional basis for graduates of the Honors Specialization in Neuroscience. The other BSc degrees offered by Basic Science departments in Schulich, currently conferred through the Faculty of Science, will continue to be conferred through the Faculty of Science. As described in the original proposal, registration in Year 1 of the Honors Specialization in Neuroscience will normally be in the Faculty of Science. Registration in Years 2 – 4 will be in the Schulich School of Medicine & Dentistry. The Dean's Office in the Faculty of Science will be responsible for Academic Counselling of the students registered in the Honors Specialization in Neuroscience.

S.12-90 **Revision to the Dentistry Sessional Dates**

The sessional dates for Dentistry incorrectly indicated a two-week examination period, instead of the three weeks allowed by the Structure of the Academic Year policy: <http://www.uwo.ca/univsec/handbook/general/structure.pdf>

Corrections have been made to the academic calendar as follows:

2012

~~April 30 – May 11~~ Final examinations Year 2, 3 / ITD 1 students
April 30 – May 18

2013

~~May 6 – 17~~ Final examinations Year 2, 3 / ITD 1 students
May 6 - 24

REPORT OF THE HONORARY DEGREES COMMITTEE [Exhibit V]
(*Exhibit V was emailed to Senators prior to the Senate meeting*)

S.12-91 **Honorary Degree Recipients – Spring Convocation 2012**

The Report of the Honorary Degrees Committee announcing the honorary degree recipients for Spring 2012, detailed in Exhibit V, was received for information.

S.12-92

REPORT OF THE ACADEMIC COLLEAGUE [Exhibit VI]

The report of the Academic Colleague covering the February meeting of the COU Academic Colleagues, detailed in Exhibit VI, was received for information. Issues reported on include: Drummond Report, Tuition, Ontario Graduate Scholarships, Three-Year Undergraduate Degrees, Public Relations, Online Institute, Research Funding and Undergraduate Research Activities.

ADJOURNMENT

The meeting adjourned at 2:40 p.m.

A. Chakma
Chair

I. Birrell
Secretary



President's Report to Senate

April 13, 2012

Western 

Environmental scan

- Provincial budget
- Federal budget
- IBM Cloud Computing Partnership

Western 

Humanitarian Awards

Henri Boyi, Department of French

Bob Gough, Western Heads East, and
Housing & Ancillary Services

Western 

Distinguished University Professors

Stanley Dunn, Biochemistry

Moira Stewart, Family Medicine

Jonathan Vance, History

Jesse Zhu, Engineering

Western 

Hellmuth Prize

John Meyer, Psychology

Terry Peters, Robarts Research Institute

Western 

Killam Prize

John Whalley, Economics

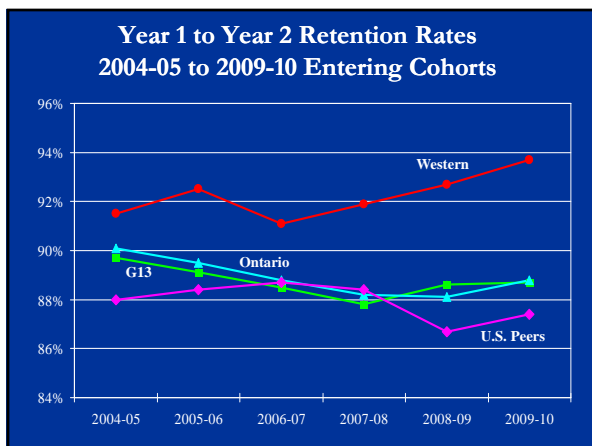
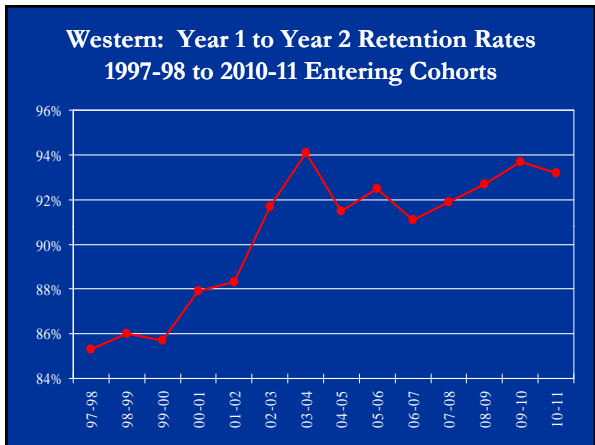
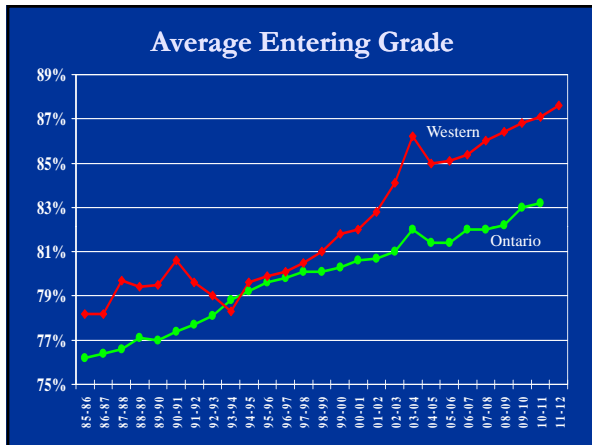
Western 



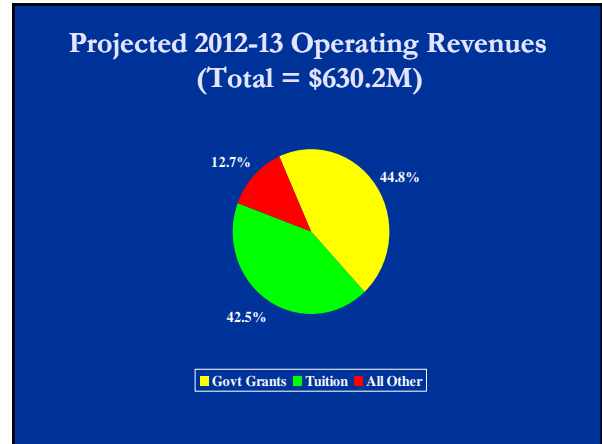
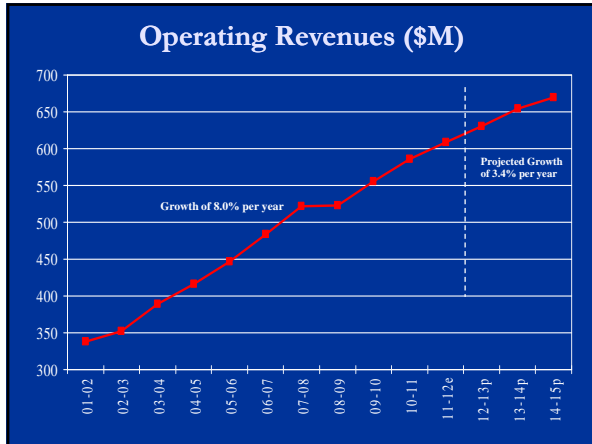
Western University
2012-13 Operating and Capital Budgets

Senate
April 13, 2012

- Context/Background**
- Moving to Year 2 of 4-Year Plan
 - Strategic Plan continues to guide our priorities
 - *Reaching Higher* and *Putting Students First* – and associated investments – have ended
 - Provincial Budget – March 27, 2012
 - Province facing significant debt
 - PSE did better than other sectors
 - Some uncertainties about grant funding from 2013-14
 - Tuition framework extended only to 2012-13

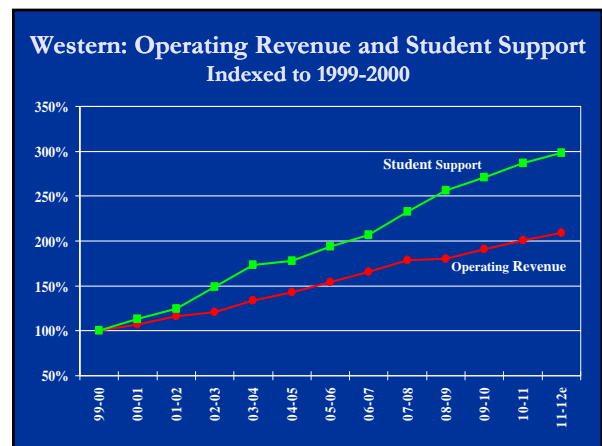
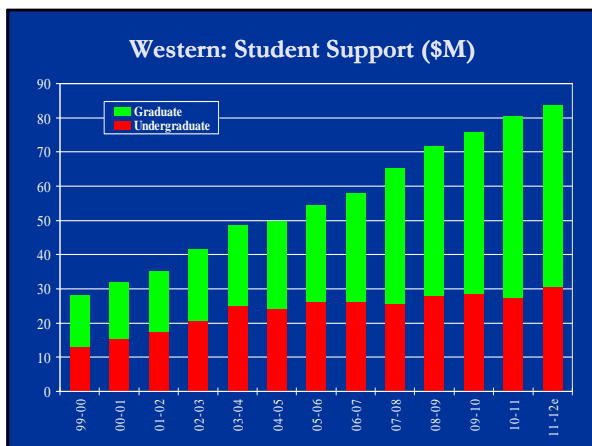


- Operating Revenues for Remaining 3 Years**
- Modest Enrolment Growth is Key to Additional Revenues
 - About 1,500 additional students – roughly 50/50 undergrad/grad
 - Undergraduate growth is International Students
 - Government Grants
 - Province has confirmed enrolment growth funding
 - Tuition Fees
 - Domestic Tuition – framework continues in 2012-13
 - International Tuition Increases planned



- ### Expenditures
- Multi-year Commitments made last year – to the Faculties and Support Units – for the full 4 years
 - New Revenue Sharing Mechanism for the Faculties
 - Academic Priorities Fund (APF) for the Faculties
 - Funding to “Maintain Core Services” in the Support Units
 - Support Unit Priorities Fund (SUPF)
 - Targeted Allocations for Priorities and New Initiatives
 - Western International
 - Fundraising Campaign -- Endowed Chairs and Operations

- ### Expenditures
- Student Financial Aid – high priority
 - Undergraduate Scholarships
 - \$6.4M in 2012-13 -- additional \$147K
 - Tuition Set-Aside – for needs-based support
 - \$13.1M in 2012-13 -- additional \$664K
 - Faculties now responsible for Graduate Student Support
 - \$52.7M in 2012-13 -- additional \$3.4M
 - Total Spending of over \$82M in 2012-13



Expenditures

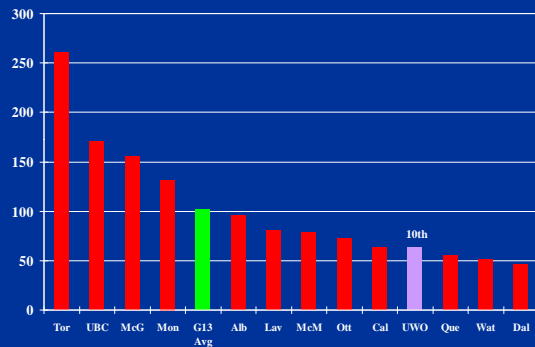
- **University-wide Expenditures: Major Items**
 - Utilities -- \$17.8M
 - Library Acquisitions -- \$13.6M
 - MMI Transfer -- \$11.75M
 - IT Infrastructure -- \$7.4M
 - FFICR Transfer to Capital -- \$3.0M

- Total Spending of \$62M in 2012-13

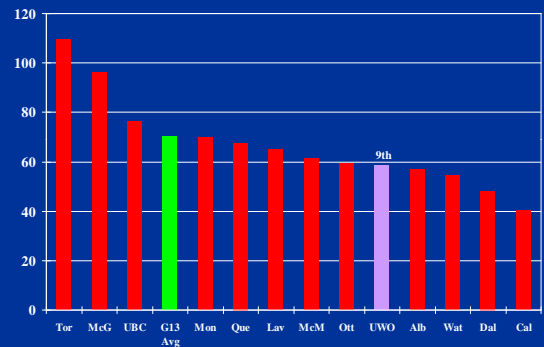
New Initiatives and Priorities

- **Enhancing our Research/Scholarship Profile**
 - Highest Priority operationalized through:
 - Establish New or Strengthen Existing Research Clusters
 - Attract and Retain Internationally-recognized Scholars
 - Plan and Design International Visits, Exchanges, and Conferences
 - Aggressively pursue/support CERCs, CFI Initiatives, and Federal Granting Council Proposals
 - **Recommending \$2.6M Base and \$30M One-time Funding – to be used over next 7 Years**

**G13 Universities Total Granting Council Funding (\$M)
(Grants, Career Awards, and Scholarships)**



G13 Universities: 2009-10 Total Granting Council Funding per Eligible Researcher (\$000)



New Initiatives and Priorities

- **Graduate Expansion**
 - Continues to be of High Priority
 - Our Enrolment Strategy includes commitment to maintain overall proportion of Graduate Students
 - Nearly 22% of Graduate Students are International
 - Government's Focus is on Domestic Students
 - In order to support expansion of Domestic Graduate Enrolments, the Doctoral Supervision Grant is being re-instated – for remaining 3 years of 4-year plan
 - \$2,000 per new domestic Ph.D student
 - Estimated Annual Budget of \$1M

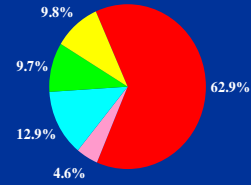
New Initiatives and Priorities

- **Support for our Fundraising Campaign**
 - Campaign Goal set at \$750M
 - Focus is on Endowed Chairs, Student Financial Aid, Support for Major Research Initiatives
 - **Recommending allocation of \$856K Base and \$1.35M One-time Funding**

One-Time Expenditures

- Major Items in 2012-13
 - Research/Scholarship Priorities \$30.0M
 - Doctoral Supervision Grant \$ 1.0M
 - Flowthrough of Robarts Revenues \$ 5.5M
 - Targetted Medical Pgm Expansion \$ 3.7M
 - Support for Research Initiatives \$ 0.8M
 - Faculty Recruitment Initiatives \$ 0.7M
- Total of over \$48M

2012-13 Operating Expenditures (Total = \$636.4M)



■ Faculties ■ Schol/Burs ■ Support Units ■ University-Wide Exp ■ All Other

Summary of the 2012-13 Operating Budget

- Revenues = \$630.2M
- Expenditures = \$636.4M
- In-Year Deficit = \$6.2M
 - Due to \$30M One-time Allocation for "Enhancing our Research and Scholarship Profile"
- Operating Reserve Forecast = \$37.9M
 - To be used (i.e. spent down) as part of 4-year plan

The Capital Budget

Overview of 2012-13 Capital Budget

- Supports Long-Range Space Plan
- Next Set of Projects
 - Delaware Hall Renovations
 - Renewal of University College
 - Interdisciplinary Advanced Studies Building
 - Renewal of Schulich School Facilities
 - Renewal of TH, SEB, HSA, Elborn
 - Expansion of Schulich School Facilities
- Western's Downtown Campus
 - Proposal going to City in the coming weeks

Overview of 2012-13 Capital Budget

- Total Spending of \$146.0M
- \$93.5M for New Construction
 - New Undergraduate Residence (\$43.1M)
 - New Ivey Building (\$23.4M)
 - WindEEEE (\$10.1M)
 - Medical Education Building (\$8.7M)
 - B&G Courtyard (\$3.2M)
 - AMP Support Building (\$2.7M)
 - ICRC (\$2.3M)

Overview of 2012-13 Capital Budget

- **\$18.4M for Major Renovations**
 - Talbot College – including expansion (\$8.7M)
 - Conversion of Thames Hall Pool (\$3.0M)
 - Final Stages of Physics & Astronomy Project (\$2.5M)
- **\$34.2 for All Other Expenditures**
 - Utilities and Infrastructure (\$8.4M)
 - Modernization of Academic Facilities (\$4.7M)
 - General Maintenance & Modernization (\$7.1M)
 - Housing Renovations (\$7.9M)
 - All Other (\$6.1M)